



speedtrap protection for high-performance cars

Stinger System User Manual

Legality

Many countries in the world have their own, unique regulations regarding drivers being alerted to, and protected from, speedtraps. Depending on the country, citizens may or may not have the freedom to receive information concerning speedtraps and to be alerted accordingly. In some countries citizens have the liberty to freely pick up all radio signals, while in others that is made illegal. Also the freedom to receive the information from laser speedtrap guns often differs per country.

In order to offer its products to car drivers throughout the world (like in the so called "common market" of the E.U., where the laws vary widely per country, as well as in many other countries and states on our planet), Stinger, in certain markets, only supplies versions of the Stinger system that are incapable of certain functionalities. Radar Alerting, Laser Alerting, LaserShield®, and SpotList may not be available on those versions.

Please remember that it is and always will be your personal responsibility to be aware of and abide by the locally applicable laws. Therefore, please always thoroughly check local legislation before using your Stinger system. If you are driving in a country where you do have the freedom to use Radar Alerting and/or Laser Alerting and/or LaserShielding and/or SpotList Alerting, you can download and install the software appropriate for that country.

Of course you can later delete this (new) functionality, in order to easily and completely stay in compliance with local legislation whenever entering a jurisdiction that does not allow one or more of the above mentioned functionalities. Erasing is achieved like this: on the View interface by pressing the 'S' key, then the Erase button in the next screen. On the Strip interface by simultaneously holding - and + for 3 seconds or longer. On the LED and button by pressing the button for 4 seconds. Erasing ensures that your Stinger system is incapable of Radar Alerting, Laser Alerting, LaserShield®, and sometimes SpotList Alerting. A new software download and installation (available where allowed) are required in order to once again change the version of your Stinger system.

Please be aware that all features and functionalities described in this manual are subject to the presence of the corresponding hardware modules.

Note: Under no circumstance does your Stinger constitute a license to exceed the posted speed limits. Alerts from your Stinger serve as an effective reminder to mind your speed. Always drive responsibly and pay full attention to traffic.

Copyright 2012-2020 Stinger. All rights reserved. No part of this manual may be reproduced, nor in whole, nor in part, without the express prior permission of Stinger. Stinger, the Stinger logo, the Stinger 'S' are registered trademarks of Stinger. All other trademarks belong to their registered owners. All specifications and functionalities in this manual and of the products described there in are subject to change.

Stinger System User Manual - SSUM-INT-V1.2 © 2012-2020 Stinger

Important Safety Instructions

Read carefully, prior to operating the laser

Do not plug any third party equipment into any of the sockets in the Laser Center, and do not connect any part of the Stinger system to third party equipment. Doing so may cause fire or damage to the unit, and voids warranty.

Use of controls or adjustments or performance or procedures other than those specified herein may result in hazardous radiation exposure.

Special Caution

The Stinger Laser Transmitter, may transmit a laser beam that can be harmful to sight. Never, under any circumstances look at the sensor while it is operating and / or it is connected to a power supply. This is especially true for looking into the Laser Transmitter from up close, or through any kind of optical lenses!

Laser safety

The Stinger Laser has been tested and classified as a class 1 laser product in accordance to European and international eye safety regulations EN 60825-1 (2014) and IEC 60825-1 (2014) under normal operating conditions and those of single fault failure.

Definition: Class 1 laser products are safe under any reasonably foreseeable conditions of operation, but may be hazardous if a person employs optics within the beam. An outer transmitter of the Stinger Laser is labeled in accordance to regulations.



Maintenance

The Stinger system is basically maintenance free, however, you should check periodically that lenses on outer sensors are clean. You can gently clean them with any water based means or using a simple wipe.

Contact & Support Information

If, at any point, you have questions regarding your Stinger or Stinger dealers, please contact your local distributor, or:

Head Office

Phone: +31 (0)252 - 41 80 95

Website: www.stinger.com

Email: mail@stinger.com

Welcome Stinger user!

We appreciate you have chosen us for the protection of your performance vehicle. It's our goal and pleasure to help you enjoy driving in as much freedom and safety as possible, so please let us know if there is any way in which we can improve your Stinger experience.

We think you'll find the Stinger system offers the best all-around speedtrap protection out there, and combines that with the most discrete design and a highly intuitive user interface display. To help you get the most out of driving with your Stinger, please take a little time to carefully read this user manual. A Stinger system can be used with either a Strip display (for optimum discretion and simplicity) or a View display (for maximum control), so make sure to read the section that shows your display of choice.

Thank you for going with Stinger!

Contents

- | | |
|---|----|
| 1. Keeping your Stinger System up to date | 4 |
| 2. Stinger with Strip display | 5 |
| 3. Stinger with View display | 12 |

1. Keeping your Stinger up-to-date

To optimally benefit from your Stinger System we suggest you use the Stinger Desktop application on your Mac or PC to check for updates at least every other month.

1. When you start using your Stinger USB Key for the first time, please first connect it to the USB port of your Stinger and start your car in order to 'match' them.
2. Then connect the USB Key to your Mac or PC.
3. Launch the Stinger Desktop application. It will automatically check for any available updates to your Stinger. If you have not yet installed the Stinger Desktop application on your Mac or PC, you can download it from www.stinger.com/downloads.
4. Follow the instructions shown on the screen of the Stinger Desktop application to load the updates onto the USB Key.
5. Next, take the USB Key to your car and connect it to the USB port of your Stinger.
6. Turn your Stinger on. The updates on Strip will start automatically after connecting. On View, follow the installation instructions on the display.



2. Stinger System with Strip Display



Contents

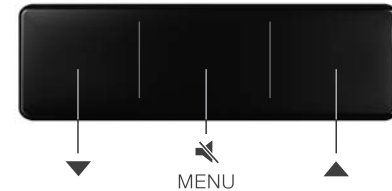
2.1 Basic use	5
2.2 Alert types	6
2.3 SafetySignals	9
2.4 Erasing LaserShield® and Laser/Radar Alerting	10
2.5 Changing Settings	10
2.6 Switching off your Stinger	11

Note: Functionalities may differ depending on the software version, installed hardware modules, and/or the region you are in.

2.1 Basic use

Operating your Stinger System with a Strip display is elegant and simple. It will automatically start up each time you turn on the ignition of your car.

Strip: Three touch areas



Strip will blink green during the start up. When the green light is constant, it is fully operational.

The color-coded alerts make driving with Strip very straightforward: Green means 'relax', yellow means 'suppressed alert' or a SafetySignal, red means 'full alert'.



Your Stinger will automatically shut down when you turn the ignition off.

2.2 Alert types

Your Stinger distinguishes between these types of speedtraps:

a. Spot



b. Section



c. Laser



d. Radar



2.2a Spot

With the help of GPS technology your Stinger will alert you for fixed speedtrap installations (such as posts with induction loops or radar installations) that we call 'Spots'. Stinger has mapped the locations of nearly all fixed speedtrap installations in many countries and distributes these to its users in the form of a so-called 'SpotList'.

Whenever you approach a SpotList location, your Strip will blink red and an audio alert will be played. The faster the tone of the audio alert beeps, the closer you are to the fixed speed trap.



Whenever you approach a SpotList location, your Strip will blink red.

2.2b Section

Section Alerting will warn you for, and guide you through, section controls (a.k.a. *SPECS* or *automated VASCAR*). With section control, cameras (regardless of your speed) register your vehicle at point 'A' and then again at point 'B' (often at least half a mile apart). A computer then automatically calculates your average speed between points 'A' and 'B' and issues a ticket if your average speed is higher than the posted speed limit.

With your Stinger, you will effortlessly be guided through section controls.

Approaching Section

When you are approaching a section control, your View will blink yellow and your Stinger will play an audio alert.



When you approach a section control location, your Strip will blink yellow.

During Section

When you enter the section control, you will get another audio alert. If your average speed is under or on the speed limit your Strip will keep blinking yellow.

However, anytime your average speed exceeds speed limit, your Strip starts to blink red and an audio alert will be played. Lower your driving speed to get your average speed down. When your average speed is back on the speed limit, the audio alert will stop and the Strip will blink yellow again.



Anytime your average speed within a section control exceeds the limit, your Strip will blink red.

2.2c Laser

Your Stinger can expertly protect you against laser speedtraps*. In such traps a handheld device, or fixed installation, is used to fire laser light towards your car to determine your speed.

Laser Alerting*

Your Stinger can instantly see a laser being fired at you, often even when cars ahead of you are being targeted, and immediately alert you with both audio and visual warnings:



When laser is detected, Strip will blink yellow or red.

Sound

While getting an alert, you can mute the sound by tapping the middle touch area:



TIP: if LaserShield is up, 'mute' will also instantly kill the LaserShield.

* Optional: available where allowed

LaserShield®*

When being fired at with laser, your Stinger can instantly deploy a shield of invisible light: LaserShield®. It can (temporarily) make it virtually impossible for laser guns to measure your speed.

Your Stinger's LaserShield® is so advanced that even modern side-lasers (positioned next to the road, for instance installed into the guard rail) can be effectively blocked (optional Stinger Side Laser required).



When laser is detected and LaserShield® is up, Strip will light up solid red.

Shield-up time

LaserShield® will stay up for a default time of 4 seconds after the initial alert. After this so called Shield-up time runs out, the shield will automatically go down, allowing law enforcement a 'second shot' at measuring your speed. At speeds below 30 km/h or ca. 20 mph, the Shield will always be down.

TIP: the Shield-up time is adjustable in the Settings menu.

2.2d Radar

Radar based speedtraps determine your speed using radio waves. In North America, such traps usually consist of a handheld radar gun, or one mounted in a police vehicle. They can even be part of a fixed installation such as in a cabinet next to or above the road.

As a result of its unique HD+ Radar Antenna your Stinger System can recognize* the radio waves emitted by the radars of temporary and mobile speedtraps.

When your Stinger recognizes a radar source, your Strip will blink red and will play an audio alert.



When radar is detected, Strip will blink red (or yellow when considered false).

Sound

While getting an alert, you can mute or adjust the volume:



*Optional: available where allowed

2.3 SafetySignals

Your Stinger incorporates an ingenious safety system. At great distances it picks up SafetySignals that can be transmitted around work zones, school zones and emergency vehicles. These signals will be transcoded in real-time and shown as the appropriate alert. This way your Stinger can alert you up to a kilometer ahead for a special traffic situations. Depending on the application, there are several ways a SafetySignal can be generated.

Cars equipped with Stinger Laser can even automatically and instantly alert other - Stinger Laser equipped - cars to dangerous situations such as heavily braking traffic.



When a SafetySignal is being received, Strip will blink yellow.

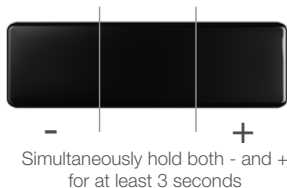
2.4 Erasing LaserShield and Laser/Radar Alerting

Different regions and countries often have their own, unique regulations when it comes to drivers being alerted for - or protected from - speed traps. Always thoroughly check local legislation before using your Stinger System. Please remember it is your responsibility to know, and abide by, the law.

You can erase Laser Alerting, LaserShielding and Radar Alerting in order to stay in compliance with local legislation whenever entering a country or region that does not, or only partly, allows certain forms of speed trap protection.

Erasing on your Strip is achieved by simultaneously holding - and + for 3 seconds or longer. After you have heard the “wiping” sound as a confirmation, the above mentioned functionalities have been deleted from your Stinger system.

A new software download (available where allowed) and installation are required in order to re-install functionalities.



2.5 Changing Settings

The Strip menu is voice guided. To enter it, just touch the **MENU** button area (except when your Strip is displaying an alert). The Strip will then light up white.



By repeatedly pressing the **MENU** button you can select the various **Settings**, as indicated by the voice guidance.

With the **DOWN** and **UP** buttons you can cycle through the **Options** for each setting.

After changing a setting, press the **MENU** button again to confirm and go to the next setting.

After about 8 seconds of inactivity, or at the end of the menu settings, you will automatically leave the Settings Menu.

A new software download (available where allowed) and installation are required in order to re-install functionalities.

The Settings menu

By (repeatedly) pressing the Menu button you can select the various settings. Use the up or down button to choose the desired option for a setting.

Settings	Options
Radar X	On or off
Radar K	On or off
Radar low power only	On or off
Radar Ka	On or off
Automatic Falselist	On or off
Laser mode	Receive only (only Laser Alerts, no Shield) or Receive and Shield.
Shield-up time	Number of seconds the LaserShield will remain up when triggered.
Side protection	When Side Laser Protection is installed, you can turn the Side-Shield on or off.
Units	Kilometers or miles.
SpeedSense	Set the speed under which your Stinger won't play audible alerts.
Brightness	Set the brightness of the Strip's backlight.
Dark mode	Turns off the backlight of the Strip except for when getting an alert.
Start-up sound	Enable or disable the start-up and the shutdown sound.
Versions	Tells the installed software version(s).

Note: settings may differ depending on the software version, installed hardware modules, and/or the region you are in.

2.6 Switching off your Stinger

Your Stinger System with Strip will automatically turn on and off along with your car. If you want to manually switch it off, press the MENU button until you hear 'goodbye' or the swipe sound.

ATTENTION: Your Stinger will not be turned on automatically upon starting your car if you have manually turned off your Stinger first. You will have to manually turn it back on by touching the MENU button.

3. Stinger System with View Display



Contents

3.1 Basic use	12
3.2 Alert types	14
3.3 Suppressing false alerts	18
3.4 Erasing LaserShield® and Laser/Radar Alerting	18
3.5 SafetySignals	19
3.6 PoliceCheck	19
3.7 Mileage Logging	20
3.8 Switching off your Stinger	20

Note: Functionalities may differ depending on the software version, installed hardware modules, and/or the region you are in.

3.1 Basic use

Your View display provides fast and full control over your Stinger. It will automatically start up each time you turn on the ignition of your car and shut down when you turn the ignition off again. Clear, color-coded alerts make driving with your Stinger pleasurable and straightforward: Green means 'relax', yellow 'suppressed alert' and red 'full alert'.

Green
No special circumstances

Yellow
Perceived threat likely unimportant

Red
Direct attention requested

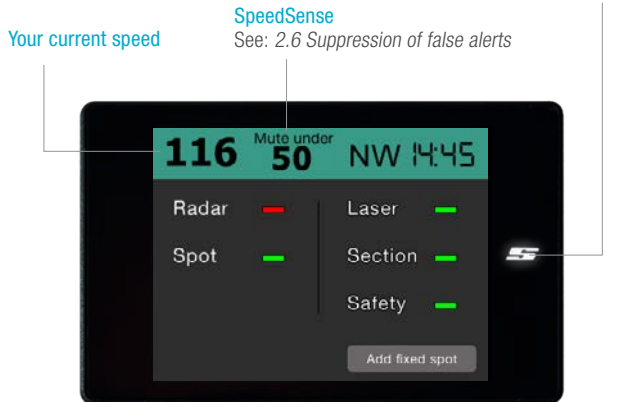
After start-up your View will take you to the Pilot screen (the standard operating screen).

For any further interaction you can use the touch display. At any time, pressing the Stinger S-key will take you directly to the Main menu.

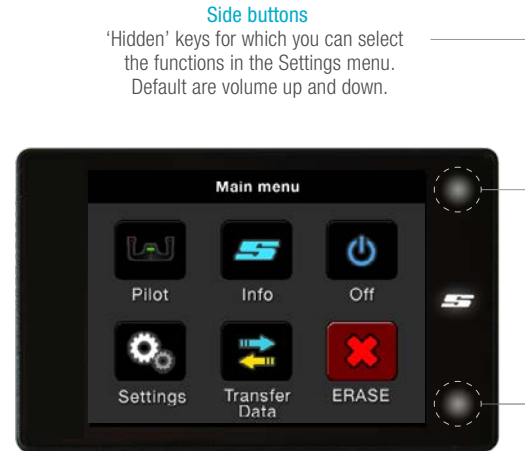
In the Main menu you can proceed to the Settings menu where you can change settings such as volume, alert behavior, brightness, time, language, kilometer/miles, side buttons and SpeedSense. From the Main menu simply press the 'Pilot' icon to return to the Pilot screen.

Pilot screen

- Function active
- Function not active
- Functionality maybe reduced by settings, software or hardware



Main menu



3.2 Alert types

Your Stinger distinguishes between these types of speedtraps:



3.2a Spot

With the help of GPS technology your Stinger will alert you for fixed speedtrap installations (such as posts with induction loops and radar installations) that we call 'Spots'. Stinger has mapped the locations of the vast majority of fixed speed trap installations in the world and distributes these in the form of a so-called 'SpotList'.

Whenever you approach a location that's in the Stinger SpotList, your View will show you the following type of alert screen:

Spot alert

Alerts will start ca. 15 seconds ahead of a spot.

Your current speed

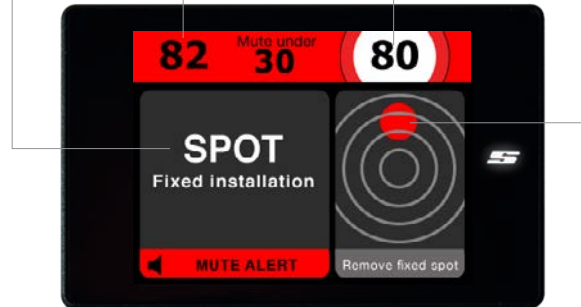
Your GPS speed (usually more accurate than that on a car's speedometer).

Limit

The stored speed limit for that location.¹

Target view

Indicates the relative proximity of the fixed installation.



¹ Stored limit might not always correspond with the actual speed limit

3.2b Section

Section Alerting will warn you for, and guide you through, section controls (a.k.a. *SPECS* or *automated VASCAR*). With section control, cameras (regardless of your speed) register your vehicle at point 'A' and then again at point 'B' (often at least a kilometer apart). A computer then automatically calculates your average speed between points 'A' and 'B' and issues a ticket if your average speed is higher than the posted speed limit.

With the clear information of your View, you will effortlessly be guided through section controls.

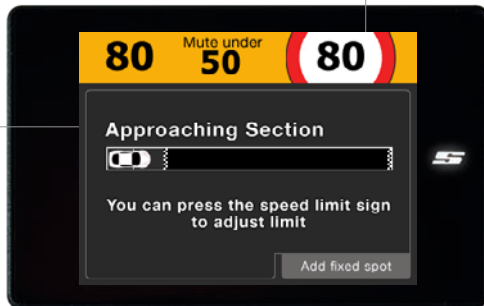
Approaching Section

Alert

You will get an initial alert when approaching the section.

Limit

The set speed limit for the section. You can change the limit set by your Stinger by pressing the speed limit sign.



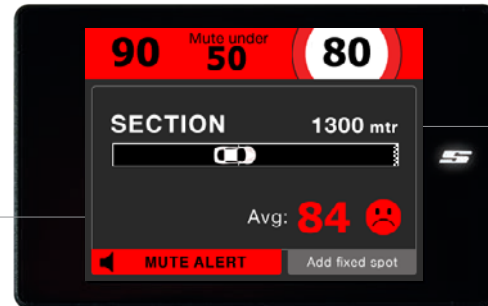
During Section

Average speed

Your real-time average speed through the Section so far.

Section length

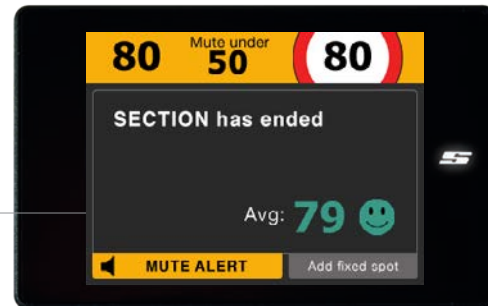
Your position within the Section shown graphically and in numbers.



End of Section

Average speed

Your final average speed over the completed Section. If you have complied with the speed limit, a green 'smiley face' will be shown. If you have been speeding, a red 'sad face' will be shown and you'll hear the sound of a camera shutter.



3.2c Laser

Your Stinger can expertly protect you against laser speedtraps*. In such traps a handheld device, or fixed installation, is used to fire laser light towards your car to determine your speed.

Laser Alerting*

The Laser Alerting functionality allows your Stinger System to instantly see when laser hits your vehicle, often even already when cars ahead of you are being targeted. In your car you will be alerted with clear visual and audible warnings.

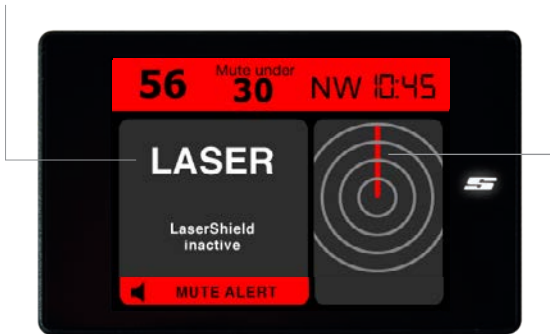
Laser Alerting

Alerts

The moment your Stinger identifies laser light it will display an alert like below. Even the type of laser device can be shown.

Target view

A visual representation of the beam indicating the direction of the lasergun.**



LaserShield®*

When being fired at with laser, your View can instantly deploy a shield of invisible light: the LaserShield®. It will (temporarily) make it virtually impossible for laser guns to measure your speed.

Your Stinger's LaserShield® is so advanced that even modern side-lasers (positioned next to the road, for instance installed into the guard rail) can be effectively blocked (optional Stinger Side Laser required).

LaserShield®

Shield-up time

Upon the initial alert, the LaserShield® will remain active for a number of seconds that can be set under *Settings > Laser > Shield-up time*. After that Shield-up time the shield will automatically go down, allowing law enforcement a 'second shot' at measuring your speed. At speeds below ca. 30km/h the shield will always be down.

Tip: Touching (near) the Shield icon immediately drops your LaserShield.



Shield active indicator

Showing countdown timer. Also the 'touch-to-kill' area.

* Optional: available where allowed

** Requires installation of front and rear Laser Center and Lasers on your car

* Optional: available where allowed

3.2d Radar

Radar based speedtraps determine your speed using radio waves. In North America, such traps usually consist of a handheld radar gun, or one mounted in a police vehicle. They can even be part of a fixed installation such as in a cabinet next to or above the road.

Radar Alerting

Signal Strength

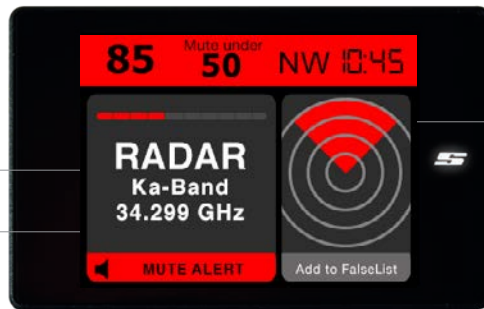
Signal strength indication displayed on a scale of 1 to 10. The higher the strength, the closer the relative vicinity of the radar.

Target view

Indicates whether radar originates from ahead, the side, or the rear.**

Band and Frequency

Name of the frequency band (X, K, Ka) as well as the exact frequency.



Radar Alerting*, however, can recognize the radio waves emitted by the radars and therefore not just alert to the (active) fixed radars, but also to the temporary and mobile ones. As a result of its unique HD+ Radar antenna, your Stinger can timely recognize speed radars where some radar detectors fall short.

The extreme accuracy of your Stinger is also evident in the Spectrum Analysis screen. Go to 'settings' to select it as your default screen or to define it as a toggle key.

Spectrum Analysis

3D Graph

Analysis of the X, K and Ka bands can be shown simultaneously. The horizontal axis indicates the relative frequency, the vertical axis the relative signal strength.



* Optional: available where allowed

** Requires installation of front and rear HD Antennas on your car

3.3 Suppression of false alerts

SpeedSense

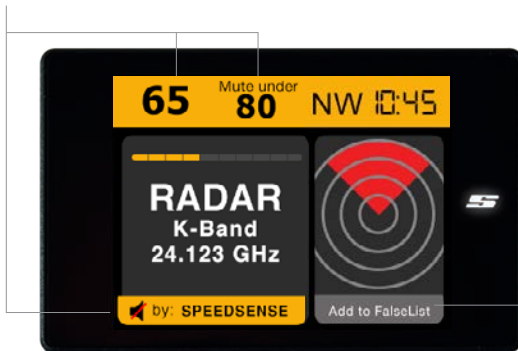
This function offers an easy way to eliminate unnecessary alerts. Simply activate a threshold speed under which your Stinger will automatically mute all alerts. Just press the *Mute Under* area to choose a speed threshold.

*FalseList**

Whenever you receive a false alert, tap the *Add to FalseList* area to immediately store that specific signal at that specific location in the FalseList of your Stinger or just wait for the system to auto learn. Either way, your Stinger System will get quieter and quieter over time.

SpeedSense

Example: You are driving 65 km/h and therefore below the SpeedSense threshold of 80 km/h. A Radar Alert will therefore stay muted.



* Optional: available where allowed

3.4 Erasing LaserShield® and Laser/Radar Alerting

Different regions and countries often have their own, unique regulations when it comes to drivers being alerted for - or protected from - speed traps. Always thoroughly check local legislation before using your Stinger System. Please remember it is your responsibility to know, and abide by, the law.

You can erase LaserShield® and Radar/Laser Alerting in order to stay in compliance with local legislation whenever entering a country or region that does not allow, or partly allows, certain forms of speed trap protection.

Erasing is achieved by first pressing the 'S' key. In the subsequent screen simply choose the ERASE button. This will turn your Stinger incapable of Radar Alerting, Laser Alerting, LaserShield®, and - depending on region - SpotList Alerting.

A new software download (available where allowed) and installation are required in order to re-install functionalities.

FalseList

If you prefer for a specific alert to stay muted subsequent times you drive by its location (irrespective of the speed you will be going), press the *Add to FalseList* area.

3.5 SafetySignals

Your Stinger incorporates an ingenious safety system. At great distances it picks up SafetySignals that can be transmitted around work zones, school zones and emergency vehicles. These signals will be transcoded in real-time and shown as the appropriate alert. This way your Stinger can alert you up to a mile ahead for a special traffic situation. Depending on the application, there are several ways a SafetySignal can be generated.

Cars equipped with Stinger Laser can automatically and instantly alert other - Stinger Laser equipped - cars to dangerous situations such as heavily braking traffic.



3.6 PoliceCheck

This unique Stinger feature can help you dispute unjust or incorrect traffic citations. With PoliceCheck switched on (*Main Menu > Settings > PoliceCheck*), your Stinger will automatically log encounters of radar, laser and other types of speedtraps. Of those moments it will also log additional data, including essential details such as time, location, your speed, and type of laser or frequency of radar device. That enables you, for instance, to later check if the radar in question has been operating within legal bandwidths. In the Stinger Desktop application you can retroactively look up, store and print all the collected data.

Record #	Date	Trip #	Time	Trap type	Speed limit	Trap details
1	15-03-2012	2	16:48:42	Radar	55.0	24181 DHz A
2	15-03-2012	2	16:48:42	Radar	58.0	24120 DHz A
3	15-03-2012	2	16:48:42	Radar	58.0	24156 DHz A
4	15-03-2012	2	16:48:42	Radar	55.0	24113 DHz A
5	15-03-2012	2	16:55:26	Radar	46.0	24125 DHz M
6	15-03-2012	2	16:56:52	Radar	46.0	24134 DHz M
7	15-03-2012	2	16:59:58	Radar	43.0	24143 DHz P
8	No GPS	3		Radar		24140 DHz
9	No GPS	3		Radar		24158 DHz
10	No GPS	3		Radar		24204 DHz
11	No GPS	3		Radar		24195 DHz
12	15-03-2012	3	23:01:10	Spotlight	50.0	
13	15-03-2012	3	23:03:24	Spotlight	46.0	
14	15-03-2012	3	23:05:48	Spotlight	51.0	
15	15-03-2012	3	23:07:00	Radar	46.0	24181 DHz V

3.7 Mileage Log

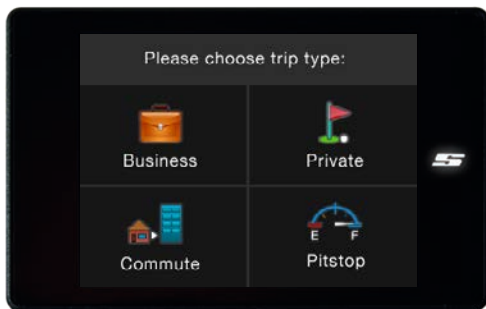
To assist with someone's hourly billing or travel cost administration, and in some regions even to help avoid extra governmental taxes, your Stinger can keep detailed track of all your business and private car travel.

At the start of any trip you simply choose the trip type (Business, Private or Commute) or simply let it default. To register trip 'interruptions' like gas and food stops you just choose 'Pitstop' when resuming your trip.

With the supplied Stinger USB Key it is very simple to transfer your MileageLogging information to the Stinger Desktop application on your Mac or PC and further manage the data.

Tip 1: In order to safeguard your Mileage Log data, we advise you to upload it to your Mac or PC on a monthly basis.

Tip 2: If you leave your USB Key hooked up to your Stinger in your car, a back-up of your Mileage Log and PoliceCheck data and/or your logging information will automatically be saved on your USB Key.



3.8 Switching off your Stinger

Your Stinger will automatically turn on and off along with your car. If you want to manually switch it off, press the Stinger 'S' > press the 'OFF' button > press another 'OFF' button. The Stinger 'S' will blink slowly in blue.

ATTENTION: Your Stinger will not be turned on automatically upon starting your car if you have manually turned off your Stinger first. You will have to manually turn it back on by pressing the Stinger 'S'.

STINGER

speedtrap protection for high-performance cars